



INTEQ

Company : Nexus Energy

Well : Garfish-1

Interval : 75.00 - 1549.07 meters

Created : 07/Jun/2008 5:55:44 AM



FORMATION EVALUATION LOG

Chromatograph Data

Methane ppm

10 | 100 | 1000 | 10000

Ethane ppm

10 | 100 | 1000 | 10000

Propane ppm

10 | 100 | 1000 | 10000

iso-Butane ppm

10 | 100 | 1000 | 10000

n-Butane ppm

10 | 100 | 1000 | 10000

iso-Pentane ppm

10 | 100 | 1000 | 10000

n-Pentane ppm

10 | 100 | 1000 | 10000

Ditch Gas %

0.1 | 1 | 10 | 100

Analysis

Calcimetry

Dolomite %

DIRECT FLUOR

LITHOLOGY DESCRIPTIONS

Cuttings

INTERPRETED
LITHOLOGY

MD meters 1:500

Gamma Ray

40 | 80 | 120 | 160 | 200

ROP

200 | 160 | 120 | 80 | 40

WEIGHT ON BIT

50 | 0

ROP BACKUP

300 | 280 | 260 | 240 | 220

RT-MSL: 39.9 mMDRT
Water Depth: 56.3 mMDRT
RT-Seabed: 96.2 mMDRT

Spud Garfish-1 @ 1330 hrs on
28/05/2008

MD: 86.66 m Azi: 347.82°
TVD: 86.66 m Incl: 0.22°

MD: 122.43 m Azi: 197.82°
TVD: 122.43 m Incl: 0.11°

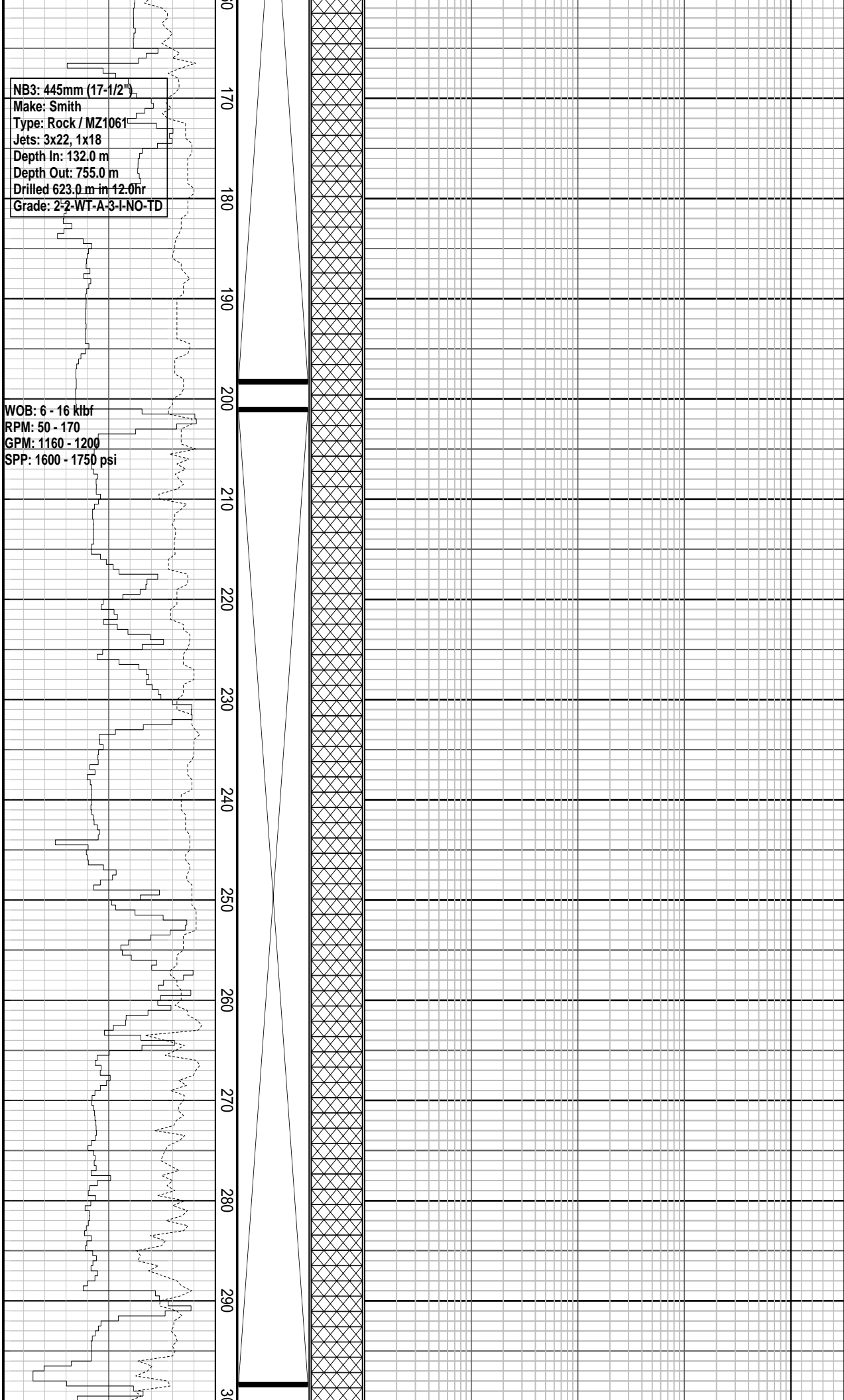
Drill with seawater & Hi-Vis sweeps,
Returns to seabed, 96.25m to 755.0m

NB1: 558mm (22")
914mm (36") H/Opener
Make: REED
Type: Rock / YC11
Jets: 3x22, 1x16
Depth In: 96.25 m
Depth Out: 132.0 m
Drilled 35.75 m in 0.5hr
Grade: 1-1-WT-A-2-I-RR-TD

Set 762mm (30") Casing at
127.8 m

28 - 29/05/2008

NB2: 558mm (22")
Clean-out BHA
Make: Smith
Type: Rock / MZ3173
Jets: 3x22, 1x16
Depth In: 132.0 m
Depth Out: 132.0 m
Cement top: 125.0m
Grade:
O-O-NO-A-O-I-NO-BHA



MD:167.41 m Azi: 261.61°
TVD: 167.41 m Incl: 0.63°

MD:225.52 m Azi: 223.32°
TVD: 225.52 m Incl: 0.37°

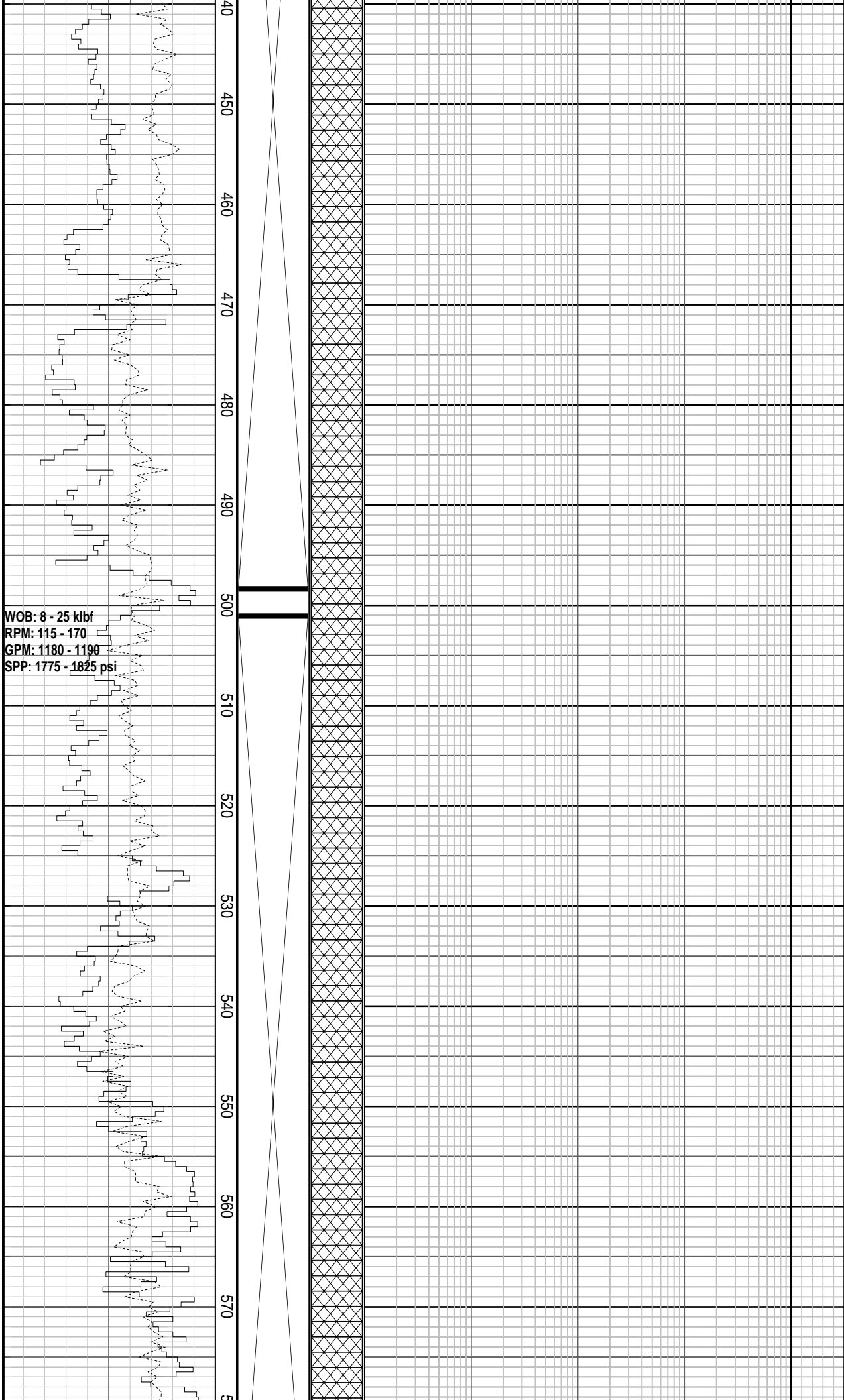
WOB: 3 - 18 klbf
RPM: 90 - 180
GPM: 1180 - 1190
SPP: 1730 - 1860 psi

WOB: 6 - 25 klbf
RPM: 145 - 175
GPM: 1190 - 1190
SPP: 1750 - 1800 psi

MD: 343.05 m Azi: 75.45°
TVD: 343.05 m Incl: 0.23°

Drill with seawater & Hi-Vis sweeps,
Returns to seabed, 96.25m to 755.0m

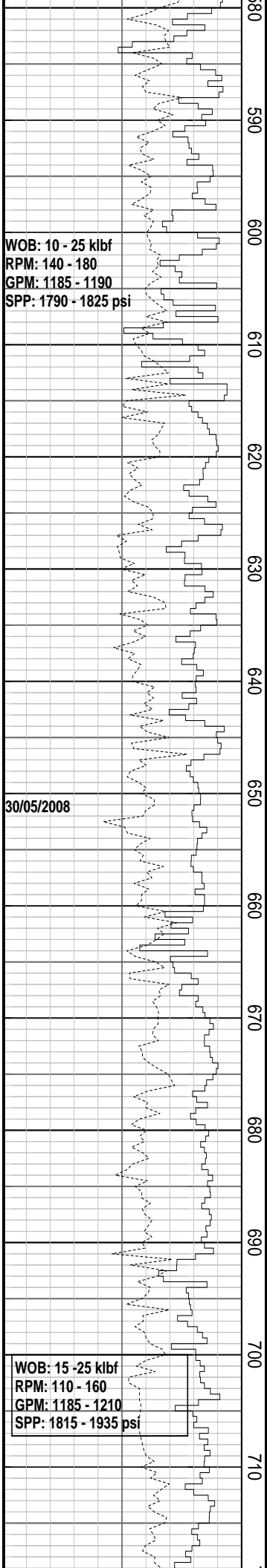
MD: 431.83 m Azi: 31.60°
TVD: 431.83 m Incl: 0.14°



WOB: 8 - 25 klb
RPM: 115 - 170
GPM: 1180 - 1190
SPP: 1775 - 1825 psi

MD: 520.09 m	Azi: 306.99°
TVD: 520.09 m	Incl: 0.26°

Drill with seawater & Hi-Vis sweeps,
Returns to seabed, 96.25m to 755.0m



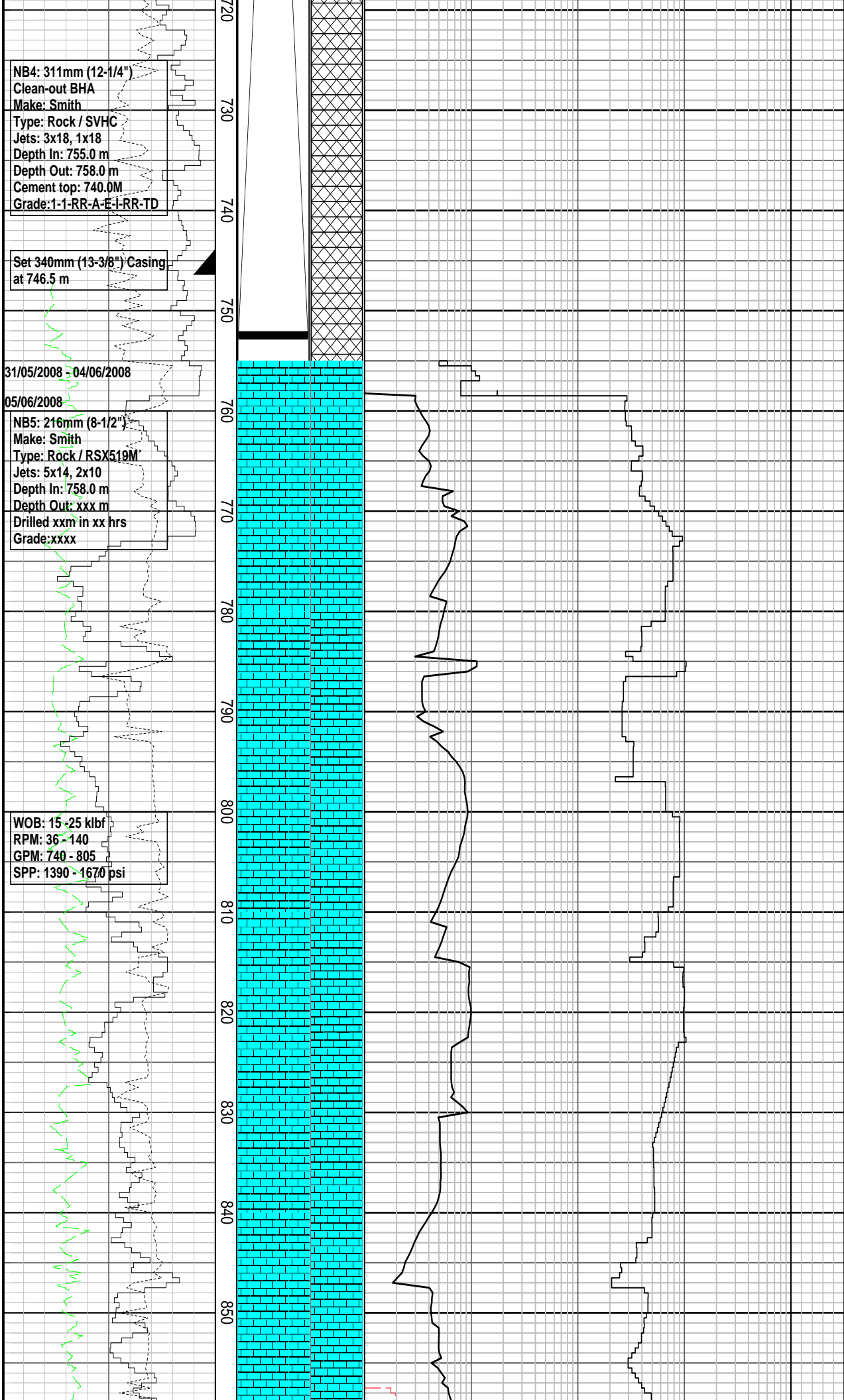
WOB: 10 - 25 klbf
RPM: 140 - 180
GPM: 1185 - 1190
SPP: 1790 - 1825 psi

30/05/2008

WOB: 15 - 25 klbf
RPM: 110 - 160
GPM: 1185 - 1210
SPP: 1815 - 1935 psi

MD: 608.29 m Azi: 280.34°
TVD: 608.28 m Incl: 0.58°

MD: 667.52 m Azi: 215.10°
TVD: 667.51 m Incl: 0.58°



Drill with seawater & Hi-Vis sweeps,
Returns to seabed, 96.25m to 755.0m

MD:768.33 m Azi: 278.20°
TVD: 768.3 m Incl: 0.31°

17-1/2" Section TD, 755.0m

Drill with KCL Polymer drilling
fluid, 755.0m to well TD

MW: 9.5 ppg FV: 58
PV: 15 YP: 27
Gels: 9/12/15 pH: 9.5

FIT @ 758.0m with 9.5ppg
EMW:17.39 ppg @ 1020psi

MD:746.93 m Azi: 194.47°
TVD: 746.93 m Incl: 0.21°

CALCILUTITE: m gy, v sft-sft,
amor-sbblky, disp, com nod pyr, com
foss & shl frag (foram), mnr xln calc,
tr v f gr qtz, mnr m gy arg mtrx

MD:957.62 m Azi: 289.14°

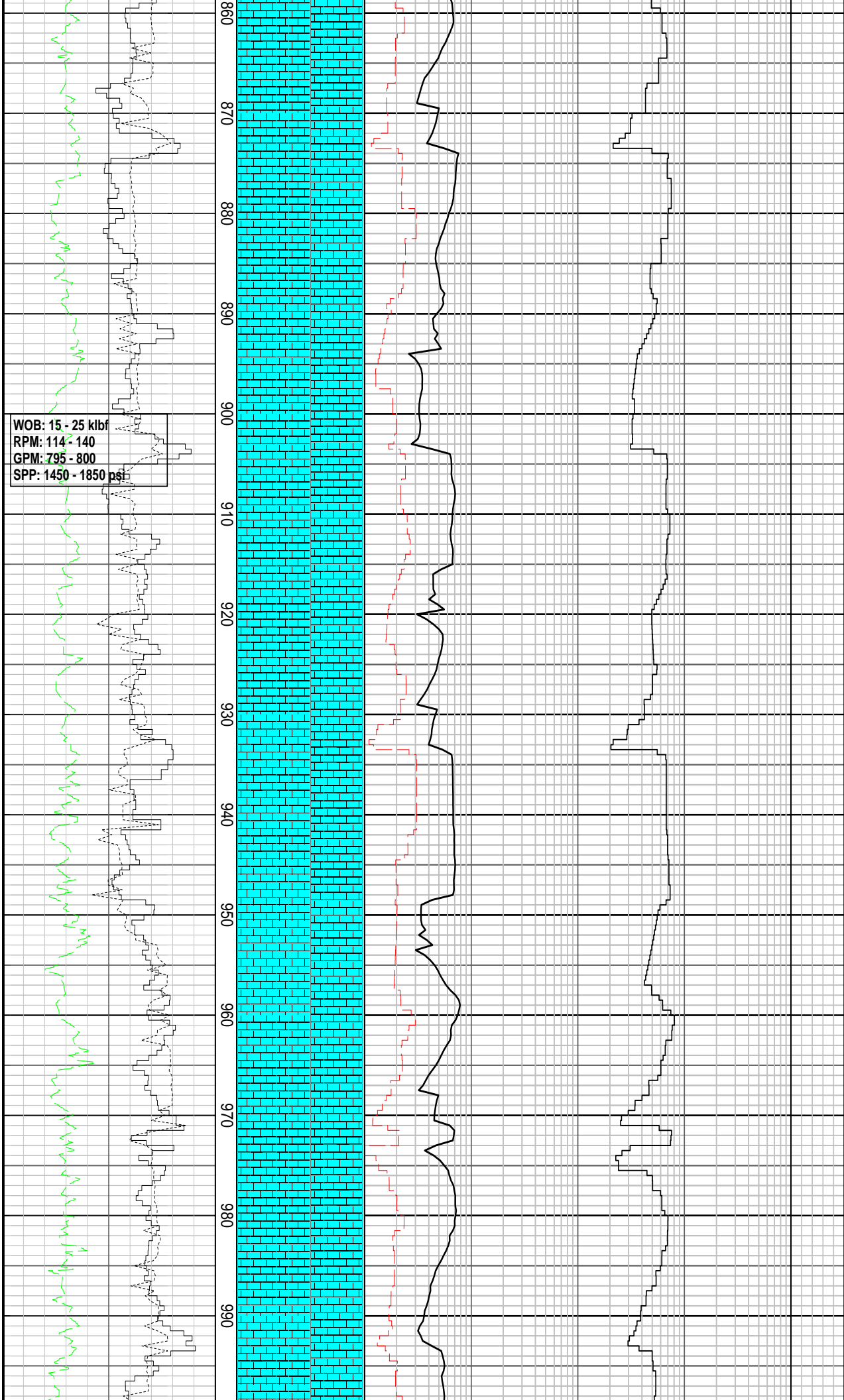
MD: 857.02 m Azi: 288.14°
TVD: 857.6 m Incl: 0.21°

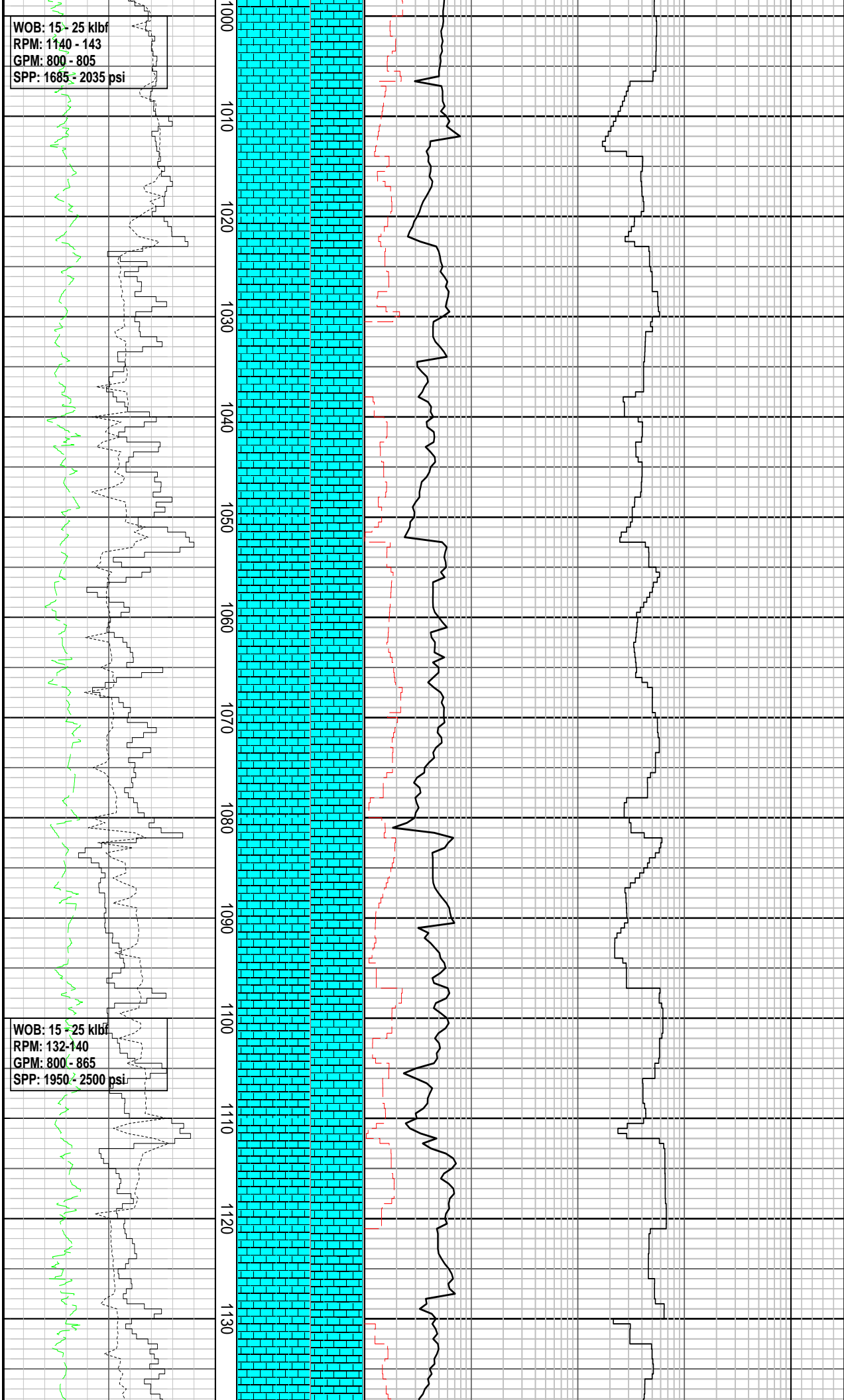
CALCULUTITE: m gy, v sft-sft,
amor-sbbiky, disp, com nod pyr, mnr
foss & shl frag (foram), tr xln calc,
com m gy arg mtx, grd-
ARGILLACEOUS CALCULUTITE

MW: 9.6 ppg FV: 46
PV: 13 YP: 26
Gels: 9/18/22 pH: 10

MD: 946.72 m Azi: 341.57°
TVD: 946.7 m Inc: 0.13°

WOB: 15 - 25 klbf
RPM: 114 - 140
GPM: 795 - 800
SPP: 1450 - 1850 psi



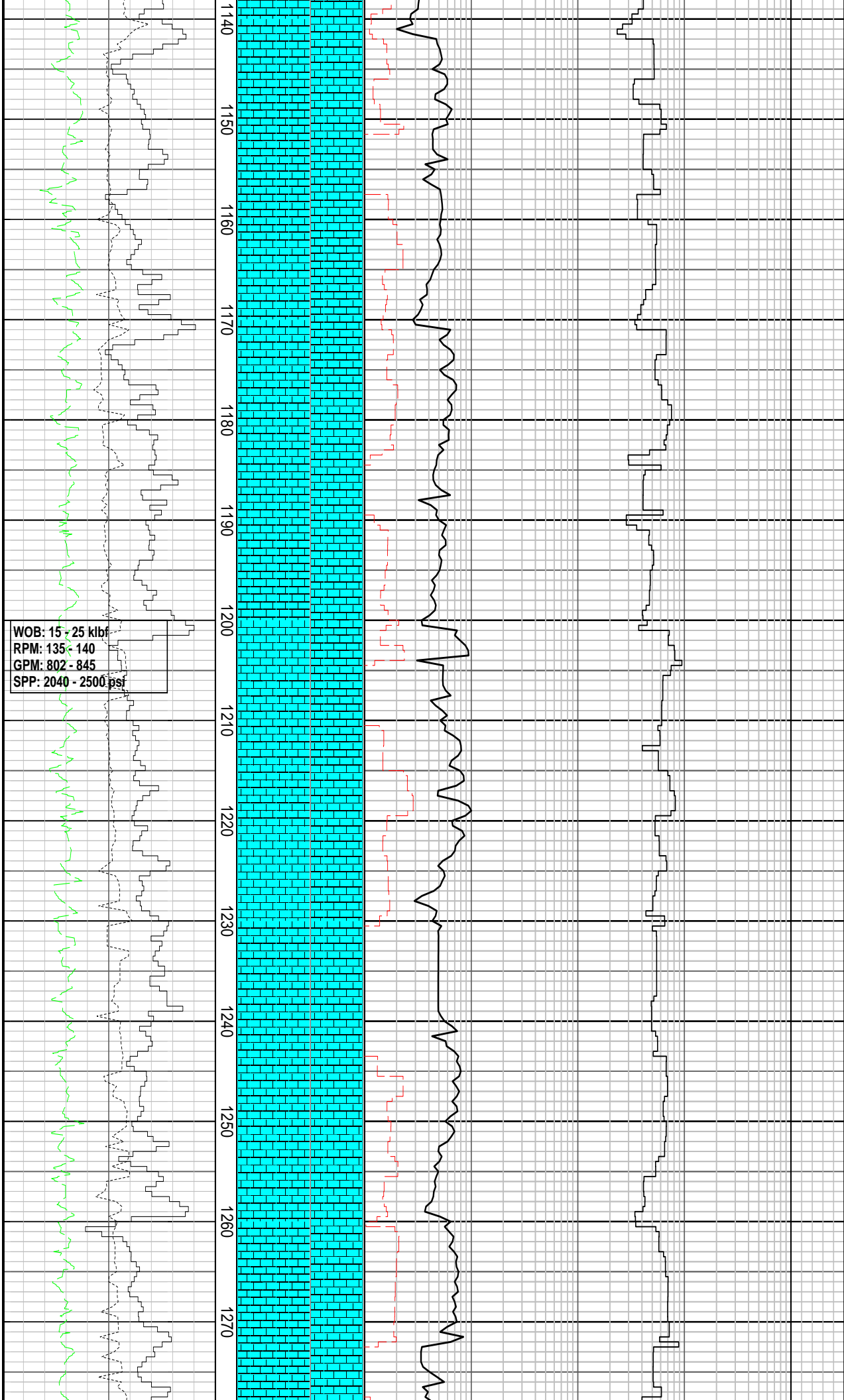


MD: 1035.71 m Azi: 313.67°
TVD: 1035.7 m Inc: 0.13°

ARGILLACEOUS CALCILUTITE: m gy, sft- mod frm, sbbiky, disp, tr foss & shl frag (foram), tr xln calc, abd m gy arg mtx

MW: 9.6 ppg FV: 56
PV: 18 YP: 33
Gels: 14/20/23 pH: 9.5

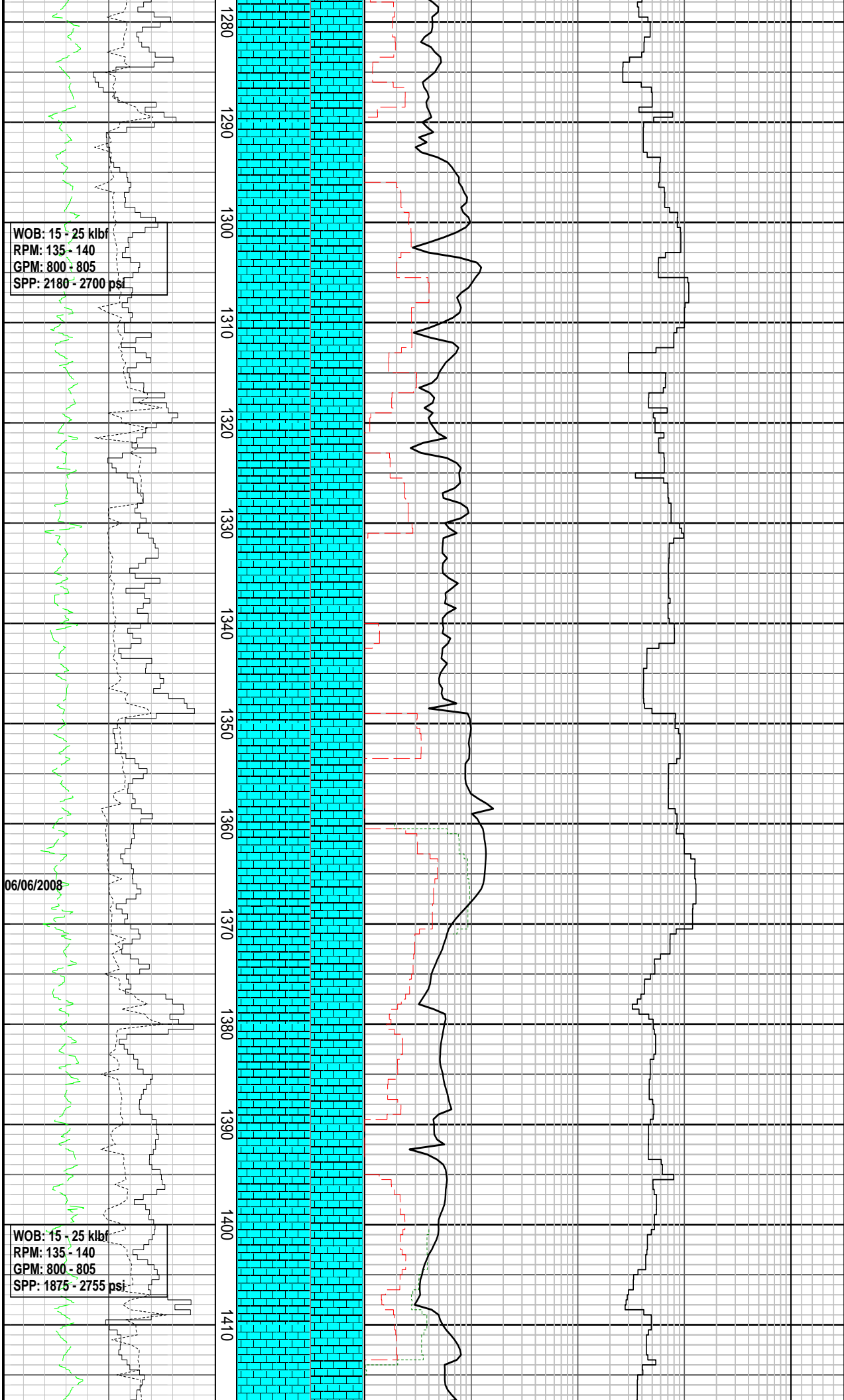
ARGILLACEOUS CALCILUTITE: m dk olv gy, frm, sbbiky-blky, disp, r but diverse range of planktic & benthic foram, tr bry frag, tr clus pyr nod, tr xln calc



MD: 1184.34 Azi: 38.39°
TVD: 1184.3 Inc: 0.20°

ARGILLACEOUS CALCILUTITE: m dk
olv gy, frm, loc mod hd, sbblky, disp,
foram, tr bry frag, tr clus pyr nod, sli
more arg

ARGILLACEOUS CALCILUTITE: m olv
gy-grnsh gy, frm, sbblky-blky, mnf sft
mod hd, r foram, tr wh, or, trnsp xln
calc, tr pyr



WOB: 15 - 25 klbf
RPM: 135 - 140
GPM: 800 - 805
SPP: 2180 - 2700 psi

WOB: 15 - 25 klbf
RPM: 135 - 140
GPM: 800 - 805
SPP: 1875 - 2755 psi

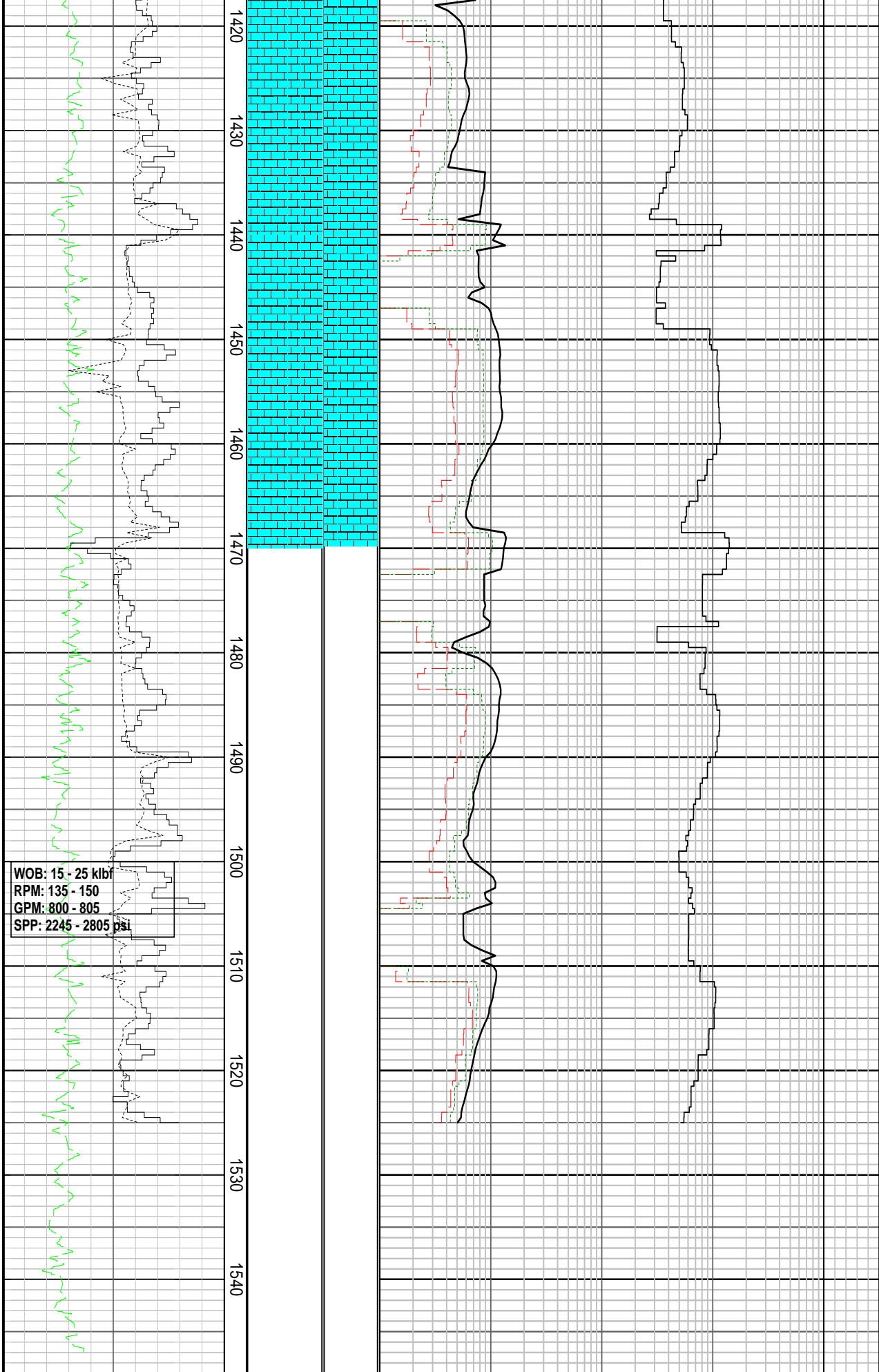
06/06/2008

ARGILLACEOUS CALCILUTITE: m olv
gy, frm, sbblky-blky, hom, tr foram, tr
pyr, tr bry, tr or trnsl calc

MD: 1333.11 m	Azi: 19.33°
TVD: 1333.1 m	Inc: 0.43°

ARGILLACEOUS CALCILUTITE: m olv
gy-grnsh gy, sft-hd, mod frm,
sbblky-blky, r planktic foram, tr pyr
nod clus

ARGILLACEOUS CALCILUTITE: lt olv
gy-grnsh gy, sft-hd, mod frm,
sbblky-blky, tr foram, tr pyr nod clus



ARGILLACEOUS CALCILUTITE: It o
gy-grnsh gy, sft-hd, mod frm,
sbbiky-blky, com foram, tr ech spn, tr
xln pyr agg

MD: 1480.34 m Azi: 19.34°
TVD: 1480.3 m Inc: 0.74°

FORMATION EVALUATION LOG					Analysis	LITHOLOGY DESCRIPTIONS
Gamma Ray	Cuttings	Chromatograph Data				
40 80 120 160 200	MD	Methane ppm			Calcimetry	

ROP					meters 1:500		INTERPRETED	LITHOLOGY	10	100	1000	10000	50 100	DIRECT FLUOR								
200	160	120	80	40					Ethane ppm				Dolomite %									
50	WEIGHT ON BIT								10	100	1000	10000	50 100									
ROP BACKUP					0				Propane ppm													
300	280	260	240	220					10	100	1000	10000										
									iso-Butane ppm													
									10	100	1000	10000										
									n-Butane ppm													
									10	100	1000	10000										
									iso-Pentane ppm													
									10	100	1000	10000										
									n-Pentane ppm													
									10	100	1000	10000										
									Ditch Gas %													
									0.1	1	10	100										